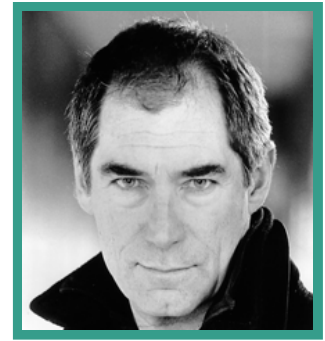


Timothy Dalton

Actor · Male



FEATURE FILM

PRODUCTION (ROLE)	COMPANY	PROJECT DETAILS
THE TOURIST	Columbia Pictures	Dir. Florian Henckel von Donnersmarck
TOY STORY 3	Pixar	Dir. Lee Unkrich
HOT FUZZ	Working Title	Dir. Edgar Wright
LOONEY TUNES: BACK IN ACTION	Warner Bros	Dir. Joe Dante
AMERICAN OUTLAWS	Warner Bros	Dir. Les Mayfield
POSSESSED	Flashpoint	Dir. Steven E de Souza
TIME SHARE	Disney ABC	Dir. Sharon von Wietersheim
MADE MEN	New Line	Dir. Richard Donner
BEAUTICIAN AND THE BEAST	Paramount	Dir. Ken Kwapis
NAKED IN NEW YORK	Fine Line Features	Dir. Daniel Algrant
THE ROCKETEER	Disney	Dir. Joe Johnston
THE KING'S WHORE	Miramax	Dir. Axel Corti
BRENDA STARR	TRC	Dir. Robert Ellis Miller
LICENCE TO KILL	United Artists	Dir. John Glen
HAWKS	Skouras	Dir. Robert E Miller
THE LIVING DAYLIGHTS	United Artists	Dir. John Glen

THE DOCTOR AND THE DEVILS	Fox	Dir. Freddie Francis
FLASH GORDON	Universal	Dir. Michael Hodges
AGATHA	Warner Bros.	Dir. Michael Apted
SEXETTE	Crown Int.	Dir. Ken Hughes
MARY QUEEN OF SCOTS	Universal	Dir. Charles Jarrot
WUTHERING HEIGHTS	American Int.	Dir. William Wyler
CROMWELL	Columbia	Dir. Ken Hughes
THE LION IN WINTER	Avco-Embassy	Dir. Anthony Harvey

THEATRE

PRODUCTION (ROLE)	COMPANY	PROJECT DETAILS
HIS DARK MATERIALS	National Theatre	Dir. Nicholas Hytner
A TOUCH OF THE POET		
ROMEO AND JULIET		
HENRY V		
HENRY IV		
LOVE'S LABOUR LOST		
KING LEAR		
THE GAME CALLED ARTHUR		
LITTLE MALCOM AND HIS STRUGGLE AGAINST THE EUNUCHS		
THE TAMING OF THE SHREW		
ANTHONY AND CLEOPATRA		

TELEVISION

PRODUCTION (ROLE)	COMPANY	PROJECT DETAILS
THE CROWN	NETFLIX	DIR. Various
DOOM PATROL	Warner Brothers	Dir. Various

PENNY DREADFUL	Sky (Series 2)	Dir. Various
PENNY DREADFUL	Sky	Dir. Various
CHUCK	NBC	Dir. Various
MARPLE: THE SITTAFFORD MYSTERY	Granada	Dir. Paul Unwin
ANTHONY AND CLEOPATRA	Hallmark Ent.	Dir. Franc Roddam
SCARLETT	CBS Miniseries	Dir. John Erman
LIE DOWN WITH LIONS		Dir. Jim Goddard
FRAMED	Arts & Entertainment	Dir. Geoffrey Sax
THE INFORMANT	Showtime	Dir. Jim McBride
THE REEF	Hearst / CBS	Dir. Robert Allan Ackerman