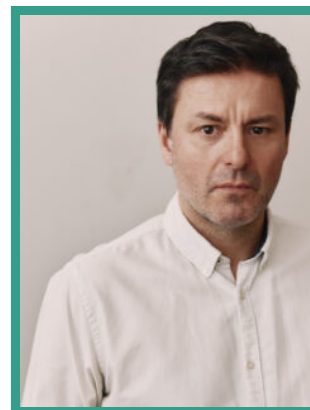


# Dominic Rowan

Actor · Male

Dominic Rowan was most recently seen playing 'Charles Powell' in THE CROWN and in final series of CATASTROPHE for C4/Apple. He is also known for many seasons of LAW & ORDER. In theatre work he was in THE INVENTION OF LOVE at the Hampstead Theatre, THE DIVINE MRS S! at the Hampstead Theatre, Stephen Daldry's THE JUNGLE in New York, having also performed in the West End and San Francisco, and other stage highlights include 'Lord Illingworth' in A WOMAN OF NO IMPORTANCE in Dominic Dromgoole's West End season, THE CHERRY ORCHARD (Young Vic), MEDEA (National Theatre) and THE DOLL'S HOUSE (Young Vic, West End, BAM New York).



## THEATRE

PRODUCTION (ROLE)	COMPANY	PROJECT DETAILS
THE INVENTION OF LOVE (John Ruskin / W.T. Stead / Jerome K Jerome)	Hampstead Theatre	Dir. Blanche McIntyre
THE DIVINE MRS S!	Hampstead Theatre	Dir. Anna Mackmin
THE GOOD LIFE (Jerry)	Theatre Royal Bath	Dir. Jeremy Sams
THE JUNGLE (Derek)	Playhouse Theatre (West End), St Anne's Warehouse (NYC) and Curran Theatre (San Fran)	Dir. Stephen Daldry & Justin Martin
A WOMAN OF NO IMPORTANCE (Lord Illingworth)	Classic Spring Theatre Company @ Vaudeville Theatre (West End)	Dir. Dominic Dromgoole
STEPPING OUT	Vaudeville Theatre (West End)	Dir. Maria Friedman
WINTER SOLSTICE	Orange Tree Theatre	Dir. Ramin Gray
GIVING	Hampstead Theatre	Dir. Bijan Sheibani
THE TEMPEST	The Globe	Dir. Dominic Dromgoole
MEASURE FOR MEASURE	The Globe	Dir. Dominic Dromgoole
THE CHERRY ORCHARD	Young Vic	Dir. Katie Mitchell
MEDEA	National Theatre	Carrie Cracknell
A DOLL'S HOUSE	Young Vic / Duke of York's (West End) / BAM New York	Dir. Carrie Cracknell
THE VILLAGE BIKE	Royal Court	Dir. Joe Hill-Gibbons

HENRY VIII	The Globe	Dir. Mark Rosenblatt
THE MISANTHROPE	The Comedy Theatre	Dir. Thea Sharrock
THE SPANISH TRAGEDY	Arcola Theatre	Dir. Mitchell Moreno
A NEW WORLD	The Globe	Dir. Dominic Dromgoole
AS YOU LIKE IT	The Globe	Dir. Thea Sharrock
AFTER DIDO	ENO / Young Vic	Dir. Katie Mitchell
UNDER THE BLUE SKY	SF Productions	Dir. Anna Mackmin
HAPPY NOW?	National Theatre	Dir. Thea Sharrock
A VOYAGE ROUND MY FATHER	Donmar Warehouse	Dir. Thea Sharrock
THE IMPORTANCE OF BEING EARNEST	Oxford Playhouse	Dir. Erica Wyman
WAY TO HEAVEN	Royal Court	Dir. Ramin Grey
DREAM PLAY	National Theatre	Dir. Katie Mitchell
FORTY WINKS	Royal Court	Dir. Katie Mitchell
IPHIGENIA AT AULIS	National Theatre	Dir. Katie Mitchell
MOURNING BECOMES ELECTRA	National Theatre	Dir. Howard Davies
THREE SISTERS	National Theatre	Dir. Katie Mitchell
THE TALKING CURE	National Theatre	Dir. Howard Davies
LOBBY HERO	Donmar	Dir. Mark Brokaw
PRIVATE LIVES	National Theatre	Dir. Phillip Franks
SEXUAL PERVERSITY IN CHICAGO	Sheffield	
MERCHANT OF VENICE	RSC	Dir. Greg Doran
TWO GENTLEMEN OF VERONA	RSC	Dir. Ed Hall
TALK OF THE CITY	RSC	Dir. Stephen Poliakoff

## TELEVISION

PRODUCTION (ROLE)	COMPANY	PROJECT DETAILS
DALGLIESH (DR EDMUND LORRIMER)	Acorn / New Pictures	Andy Tohill / Ryan Tohill

AGATHA RAISIN IV (Sylvan Dubois)	Company Pictures and Acorn TV	Dir. James Larkin
THE CROWN (Charles Powell)	Left Bank for Netflix	Dir. Various
TRYING (Jamie)	BBC Studios for Apple	Dir. Various
CATASTROPHE (Mr Maxwell)	Avalon Television for Channel 4	Dir. Jim O'Hanlon
PRESS (Joshua West)	Lookout Point for BBC1 & PBS	Dir. Tom Vaughan
SILENT WITNESS	BBC	Dir. Various
HENRY IV	BBC 2	Dir. Richard Eyre
RESTLESS	BBC 1	Dir. Edward Hall
LAW AND ORDER	ITV (Series 5 - 8)	Dir. Various
CATWALK DOGS	ITV	Dir. Tim Sullivan
BABY BOOM	BBC	
TRIAL AND RETRIBUTION	ITV	Dir. Various
THE LAVENDER LIST	BBC	Dir. Colin Barr
THE FAMILY MAN	BBC	Dir. John Strickland
RESCUE ME	BBC	
LOST WORLD	BBC	Dir. Stuart Orme
SWALLOW	Channel 4	Dir. Adrian Shergold
NORTH SQUARE	Channel 4	Dir. Philippa Langdale
HEARTS AND BONES	BBC	Dir. Roger Goldby
A RATHER ENGLISH MARRIAGE	BBC	Dir. Paul Seed
BETWEEN THE LINES	BBC	Dir. Alan Dossier
DEVIL'S ADVOCATE	BBC	Dir. Adrian Shergold
NO BANANAS	BBC	Dir. Alan Dossier
EMMA	ITV	Dir. Diamuid Lawrence
THE TENANT OF WILDFELL HALL	BBC	Dir. Mike Barker

## FEATURE FILM

PRODUCTION (ROLE)

PROJECT DETAILS

TULSE LUPER SUITCASES

Dir. Peter Greenaway

---