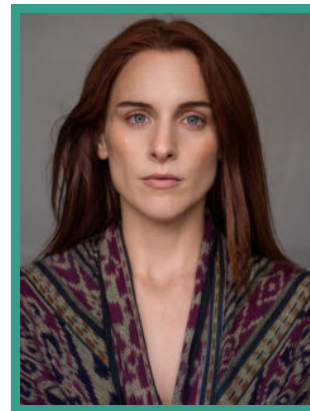


Kelly Gough

Actor · Female



TELEVISION

| PRODUCTION (ROLE) | COMPANY | PROJECT DETAILS |
|--------------------------|----------------------------|-------------------------------|
| GRACE | ITV | Dir. Various |
| SHADOW AND BONE | Netflix | Dir. Various |
| MARCELLA (Series 3) | ITV | Dir. Gilles Banner |
| CALL THE MIDWIFE | Neal Street Productions | Dirs. Various |
| STRIKE BACK | Left Bank Pictures/Cinemax | Dirs. Various |
| BROADCHURCH (Series 3) | ITV1 | Dir. Paul Andrew Williams |
| CLASS | BBC America | Dir. Philippa Langsdale |
| THE FALL (Series 2 & 3) | BBC 2 | Dir. Alan Cubitt |
| COUNTRY WOMAN | Telegael | Dir. Danny Hiller |
| VERA | ITV1 | Dir. Marek Losey |
| CASUALTY | BBC1 | Dir. Steve Hughes |
| LAW & ORDER | ITV | Dir. Joss Agnew |
| RAW (Series 2, 3, 4 & 5) | Octagon | Dirs. Liz Gill & Simon Massey |
| SCUP | Stering | Dir. Declan Recks |
| THIS IS NIGHT LIVE | RTE | Dir. James Cotter |

| | | |
|------------|----------------|-----------------------|
| AN CRISIS | Wildfire Films | Dir. Charlie McCarthy |
| THE CLINIC | RTE | Dir. Janet Traynor |

THEATRE

| PRODUCTION (ROLE) | COMPANY | PROJECT DETAILS |
|------------------------------|-------------------------|------------------------|
| HOUSE OF SHADES | Almeida | Dir. Blanche McIntyre |
| HARM | The Bush Theatre | Dir. Atri Banerjee |
| A STREET CAR NAMED DESIRE | English Touring Theatre | Dir. Chelsea Walker |
| DON CARLOS | ARA | Dir. Gadi Roll |
| MACBETH | Second Age | Dir. David Horan |
| ALL IN THE TIMING | Inis Theatre | Dir. David Horan |
| BIG LOVE | Abbey Theatre | Dir. Selina Cartmell |
| FALLING OUT OF LOVE | Yew Tree Theatre | Dir. Mikel Murfi |
| MACBECKS | Long Road Productions | Dir. David Bolger |
| PILGRIMS OF THE NIGHT | Rough Magic | Dir. Sophie Motley |
| PLAYBOY OF THE WESTERN WORLD | Druid Theatre | Dir. Gary Hynes |
| PHAEDRA | Samuel Beckett Theatre | Dir. Rachel West |
| VINEGAR TOM | Samuel Beckett Theatre | Dir. Tom Creed |
| TERRORISM | Samuel Beckett Theatre | Dir. Annabelle Comyn |
| THREE SISTERS | Samuel Beckett Theatre | Dir. David Horan |
| TWELFTHNIGHT | Samuel Beckett Theatre | Dir. Simon Coury |
| YEATS TRILOGY | Samuel Beckett Theatre | Dir. Sarah Jane Scaife |

FEATURE FILM

| PRODUCTION (ROLE) | COMPANY | PROJECT DETAILS |
|----------------------|-----------------------|----------------------|
| In Pursuet (Short) | Prod. Eleanor Higgins | Dir. Tom Knight |
| TAKING STOCK (Short) | Babyjane Productions | Dir. Siobhan McMahon |

| | | |
|--------------------|----------------------|---------------------|
| CRY ROSA (Short) | Afro-Mic Productions | Dir. Imogen Murphy |
| OUT OF INNOCENCE | Defiant Films | Dir. Danny Hiller |
| KILL COMMAND | Vertigo | Dir. Steve Gomez |
| JUMP | HotShotFilms | Dir. Keiran J Walsh |
| BELONGING TO LAURA | Samson Films | Dir. Karl Golden |