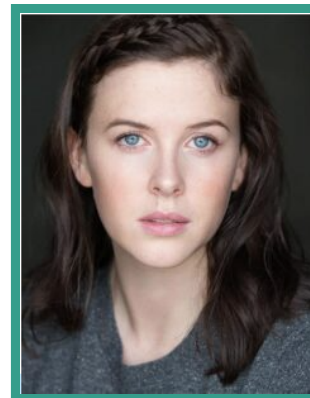


Alex Roach



FEATURE FILM

| PRODUCTION (ROLE) | COMPANY | PROJECT DETAILS |
|----------------------------|------------------------|----------------------------|
| THIS IS CHRISTMAS | Sky | Dir. Chris Foggin |
| THE KID WHO WOULD BE KING | Big Talk Productions | Dir. Joe Cornish |
| THE HUNTSMAN: WINTER'S WAR | Universal Pictures | Dir. Cedric Nicolas-Troyan |
| TESTAMENT OF YOUTH | BBC Films | Dir. James Kent |
| CUBAN FURY | Anton | Dir. James Griffiths |
| ONE CHANCE | Relevant Entertainment | Dir. David Frankel |
| PRIVATE PEACEFUL | Fluidity Films | Dir. Pat O'Connor |
| ANNA KARENINA | Universal Pictures | Dir. Joe Wright |
| THE IRON LADY | DJ Films | Dir. Phyllida Lloyd |

TELEVISION

| PRODUCTION (ROLE) | COMPANY | PROJECT DETAILS |
|-------------------|-------------------------|--|
| MEN UP | Quay Street Productions | Dir. Ashley Way |
| NIGHTSLEEPER | BBC | Dir. John Hayes and Jamie Magnus Stone |
| BODIES | Netflix | Dir. Marco Kreuzpaintner / Haolu Wang |

| | | |
|------------------------------|-----------------------|---|
| THE LIGHT / Y GOLAU | S4C | Dir. Chris Forster / Andy Newbery |
| BLACK MIRROR | Zeppotron | Dir. Colm McCarthy |
| NO OFFENCE SERIES I & II | Channel 4 | Dir. Catherine Morshead |
| WALTER | ITV | Dir. Damon Thomas |
| THIRTEENTH TALE | Vida Films | Dir. James Kent |
| UTOPIA | Kudos Film & TV Ltd | Dir. Marc Munden, Alex Garcia & Wayne Yip |
| HUNDERBY | Baby Cow Ltd | Dir. Tony Dow |
| THE SUSPICIONS OF MR WHICHER | Hat Trick | Dir. James Hawes |
| BEING HUMAN | Touchpaper Television | Dirs. Various |
| CANDY CABS | BBC/ Splash Media | Dir. Minkie Spiro |
| THE IT CROWD 4 | Talback Thames | Dirs. Graham Linehan & Derek Hallworth |

THEATRE

| PRODUCTION (ROLE) | COMPANY | PROJECT DETAILS |
|-------------------------|-------------------------|---------------------|
| NEVER HAVE I EVER | Chichester | Dir. Emma Butler |
| BATTLEMENT | RADA | Dir. Nona Shepphard |
| CRIMES IN HOT COUNTRIES | RADA | Dir. Jonathan Moore |
| IN FLAME | RADA | Dir. Lucy Skilbeck |
| THE DOOR NEVER CLOSES | Almeida Theatre Company | Dir. Polly Findlay |