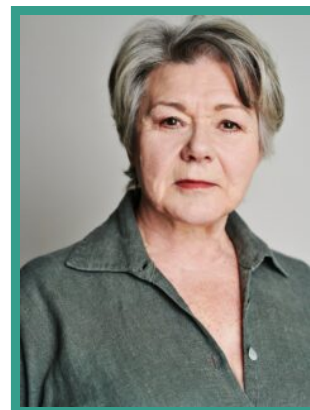


# Barbara Flynn

Actor

Represented by:

Deborah Willey



## TELEVISION

| PRODUCTION (ROLE)                    | COMPANY                   | PROJECT DETAILS     |
|--------------------------------------|---------------------------|---------------------|
| BEYOND PARADISE                      | BBC / Red Planet Pictures | Dir. Sandy Johnson  |
| KILLING EVE (Series 2)               | Sid Gentle Films          | Dir. Damon Thomas   |
| THE DURRELLS (Series 1-3)            | Sid Gentle Films          | Dir. Various        |
| PAT AND CABBAGE                      | Red Productions/ITV       | Dir. Syd MacCartney |
| THE BORGIAS                          | Showtime                  | Dir. Kori Skogland  |
| JUST HENRY                           | ITV                       | Dir. David Moore    |
| SILENT WITNESS                       | BBC1                      | Dir. Anthony Bryne  |
| NEW TRICKS                           | BBC1                      | Dir. Martyn Friend  |
| CRANFORD CHRONICLES (Series Regular) | BBC Television            | Dir. Steve Hudson   |
| THE QUEEN                            | Channel 4                 | Dir. Patrick Reams  |
| 10 DAYS TO WAR                       | BBC Television            | Dir. David Belton   |
| CHRISTMAS AT THE RIVIERA             | ITV                       | Dir. Mark Bussell   |
| CRANFORD (Series Regular)            | BBC Television            | Dir. Steve Hudson   |
| CRACKER                              | Granada                   | Dir. Antonia Bird   |
| THE LINE OF BEAUTY                   | BBC Television            | Dir. Saul Dibb      |

|                                |                                    |                                    |
|--------------------------------|------------------------------------|------------------------------------|
| ELIZABETH I                    | Company Pictures/Channel 4         | Dir. Tom Hooper                    |
| THE MARCHIONESS DISASTER       | Yorkshire Television               | Dir. Ken Horn                      |
| MALICE AFORE THOUGHT           | Mountview Film Productions For ITV | Dir. David Blair                   |
| POIROT - DEATH ON THE NILE     | London Weekend Television          | Dir. Andy Wilson                   |
| SEA OF SOULS                   | BBC Television                     | Dir. Maurice Phillips              |
| HE KNEW HE WAS RIGHT           | BBC Television                     | Dir. Tom Vaughn                    |
| SWEET MEDICINE                 | Carlton Television                 | Dir. John Woods                    |
| THE INSPECTOR LYNLEY MYSTERIES | BBC Television                     | Dir. Ulrick Riley                  |
| HORNBLOWER                     | Meridian                           | Dir. Andrew Grieve                 |
| MURDER IN MIND                 | BBC Television                     | Dir. Paul Knight                   |
| FORSYTE SAGA                   | Granada Television                 | Dir. David Moore                   |
| NIGHT AND DAY                  | BBC Television                     | Dir. Nick Renton                   |
| INSPECTOR LYNLEY MYSTERIES     | BBC Television                     | Dir. Various                       |
| LORNA DOONE                    | BBC Television                     | Dir. Mike Barker                   |
| PERFECT                        | RDF                                | Dir. John Strickland               |
| WIVES AND DAUGHTERS            | BBC Television                     | Dir. Nick Renton                   |
| DEAR NOBODY                    | Columbia                           | Juliet May                         |
| THE VANISHING MAN              | ABTV                               | Dir. Maurice Phillips              |
| CRACKER - I, II & III          | Granada Television                 | Dir. M. Winterbottom & A. Wilson   |
| CHANDLER & CO                  | BBC                                | Dir. Various                       |
| MAIGRET                        | Granada Television                 | Dir. Various                       |
| WHERE ANGELS FEAR TO TREAD     | Compact Films                      | Charles Sturridge                  |
| CRIMINAL JUSTICE               | HBO                                | Dir. Andy Wolk                     |
| BEIDERBECKE TRILOGY            | Yorkshire Television               | Dir. David Reynolds                |
| BENEFACTORS                    | BBC Television                     | Dir. Barry Davis                   |
| THE JUSTICE GAME               | BBC Television                     | Dir. Norman Stone, Moira Armstrong |
| INSPECTOR MORSE                | WGBH                               | Dir. Various                       |

|                           |                                |                                     |
|---------------------------|--------------------------------|-------------------------------------|
| SECOND CHANCE             |                                | Dir. Gerry Mill, Richard Handford   |
| A VERY PECULIAR PRACTICE  | BBC Television                 | Dir. David Tucker                   |
| BOON                      | Central Independent Television |                                     |
| SEASON'S GREETINGS        | BBC Television                 | Dir. Michael A. Simpson             |
| THE BEIDERBECK AFFAIR     | Yorkshire Television           | Dir. David Reynolds, Frank W. Smith |
| THE BARCHESTER CHRONICLES | BBC Television                 | Dir. David Giles                    |
| MAYBURY                   | BBC Television                 | Dir. Various                        |
| THE BAGTHORPE SAGA        | BBC Television                 | Dir. Paul Stone                     |
| KEEP IT IN THE FAMILY     | Thames Television              | Dir. Mark Stuart                    |
| THE GENTLE TOUCH          | London Weekly Television       | Dir. Various                        |
| MURDER MOST ENGLISH       | BBC Television                 | Dir. Ronald Wilson                  |
| OPEN ALL HOURS            | BBC Television                 | Dir. Sydney Lotterby                |
| A FAMILY AT WAR           | Granada Television             | Dir. Various                        |

## FEATURE FILM

| PRODUCTION (ROLE)                | COMPANY          | PROJECT DETAILS       |
|----------------------------------|------------------|-----------------------|
| CHEERFUL WEATHER FOR THE WEDDING | Yellow Knife     | Dir. Donald Rice      |
| BURLESQUE FAIRYTALES             | Double Barrel    | Dir. Su Luciani       |
| MISS POTTER                      | Phoenix Pictures | Dir. David Thwaites   |
| YOU'RE DEAD                      | Streamline       | Dir. Andy Hirst       |
| KING LEAR                        | BBC Television   | Dir. Richard Eyre     |
| BRITANIA HOSPITAL                | EMI Films        | Dir. Lindsay Anderson |

## THEATRE

| PRODUCTION (ROLE)  | COMPANY         | PROJECT DETAILS     |
|--------------------|-----------------|---------------------|
| WE STARTED TO SING | Arcola Theatre  | Dir. Barney Norris  |
| HIGH SOCIETY       | Old Vic Theatre | Dir. Maria Friedman |

|                                |                                |                         |
|--------------------------------|--------------------------------|-------------------------|
| VERSAILLES                     | Donmar Warehouse               | Dir. Peter Gill         |
| COPENHAGEN                     | Sheffield Lyceum               | Dir. David Grindley     |
| HAMLET                         | Sheffield Crucible             | Dir. Daniel Evans       |
| THE REVENGERS TRAGEDY          | The National Theatre           | Dir. Melly Still        |
| AN EXPERIMENT WITH AN AIR PUMP | Royal Exchange Theatre Company | Dir. Shelagh Stephenson |
| THE BULLET                     | Donmar Warehouse               | Dir. Dominic Cooke      |
| KING LEAR                      | National Theatre               | Dir. Richard Eyre       |
| AGAMEMNON'S CHILDREN           | The Gate Theatre               | Dir. Laurence Boswell   |
| THE WAY OF THE WORLD           | Lyric Theatre                  | Dir. Peter Gill         |
| WOMEN OF TROY                  | Gate Theatre                   | Dir. Katie Mitchell     |
| ANTIGONE                       | Cottesloe Theatre              | Dir. Peter Gill         |
| TALES FROM HOLLYWOOD           | National Theatre               | Dir. Peter Gill         |
| EARLY DAYS                     | National Theatre               | Dir. Lindsay Anderson   |
| PLUNDER                        | National Theatre               | Dir. Michael Blakemoore |

## RADIO

| PRODUCTION (ROLE) | COMPANY             | PROJECT DETAILS        |
|-------------------|---------------------|------------------------|
| HOMEFRONT         | BBC RADIO 4 DRAMA   | Dir. Jessica Dromgoole |
| ROAD TO VENICE    | Unique Broadcasting | Dir. Jane Morgan       |
| WORDS AND MUSIC   | BBC RADIO           |                        |

## SKILLS / QUALIFICATIONS

ACCENTS: RP\*, American-Standard, Black Country, Bristol, Cornwall, Liverpool, London, Manchester, Midlands-West, Norfolk, Nottingham, Stafford, Warwick, West Country, Yorkshire

LANGUAGES: (High Standard) French, German, Swedish

MUSIC & DANCE: Skilled Mezzo

SKILLS: Car Driving Licence

