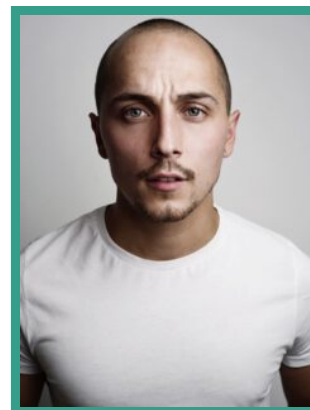


# Elliot Warren

Actor



## FEATURE FILM

PRODUCTION (ROLE)	COMPANY	PROJECT DETAILS
HOW TO HAVE SEX (Elliot)	Film4	Dir. Molly Manning Walker
MY MOTHERS WEDDING (Sean Dwyer)		Dir. Kirstin Scott Thomas
TO A CINDER (Paul)	Bloody Rascal	Dir. Harry Scriven
THE BATMAN (Train Gang Leader)	Warner Bros.	Dir. Matt Reeves

## TELEVISION

PRODUCTION (ROLE)	COMPANY	PROJECT DETAILS
GRANTCHESTER (Tom)	ITV	Dir. Katherine Churcher
A THOUSAND BLOWS (Sharkey)	Disney+	Dir. Tinge Krishnan
MASTERS OF THE AIR (Lt. James Douglass)	Apple	Dir. Cary Fukunaga
SILENT WITNESS (Lewis)	BBC	Dir. Gordon Anderson
I HATE SUZIE (Assistant Director)	Bad Wolf	Dir. Georgi Banks-Davies
THE FIRST TEAM (Nervous Bob)	Fudge Park	Dir. Iain Morris & Damon Beesley
A CHRISTMAS CAROL (Rag & Bone Man)	BBC & FX	Dir. Nick Murphy
DOCTORS (Baz Clegg)	BBC	Dir. Jennie Paddon

## THEATRE

PRODUCTION (ROLE)	COMPANY	PROJECT DETAILS
FLESH & BONE (Terrence)	Soho Theatre/Unpolished Theatre	Dir. Elliot Warren & Olivia Brady
NOTHING IN A BUTTERFLY (Michael/Bottle)	Soho Theatre/Synergy Theatre	Dir. Chris White & Ric Renton
FLESH & BONE (Terrence)	Adelaide Fringe/Unpolished Theatre	Dir. Elliot Warren & Olivia Brady
FLESH & BONE (Terrence)	The National Theatre Studio/Unpolished Theatre	Dir. Elliot Warren & Olivia Brady
FLESH & BONE (Terrence)	The Pleasance Theatre/Unpolished Theatre	Dir. Elliot Warren & Olivia Brady
EAST (Mike)	South London Theatre	Dir. Kelly-Kim Cranston
BLUE STOCKINGS (Lloyd)	AUB	Dir. Ken Robertson
UNPLOISHED (Mark Harley)		Dir. Elliot Warren

## SHORT FILM

PRODUCTION (ROLE)	COMPANY	PROJECT DETAILS
HARD TIMES (Danny)	Another Footnote	Dir. Elliot Warren & Elliot Gonzo
MEMOIRS OF A GEEZA (Terrence)		Dir. Theo James Krekis
CHANGE (Darren)		Dir. Tom Smith
STICK UP PART 4 (Tom)	Extra Pulp Films	Dir. Elliot Warren
STICK UP PART 3 (Tom)	Extra Pulp Films	Dir. Elliot Warren
STICK UP PART 2 (Tom)	Extra Pulp Films	Dir. Elliot Warren
STICK UP (Tom)	Extra Pulp Films	Dir. Elliot Warren
CHICKEN NOODLE, INIT (Tony)	Burris Film	Dir. Evan Burris Trout