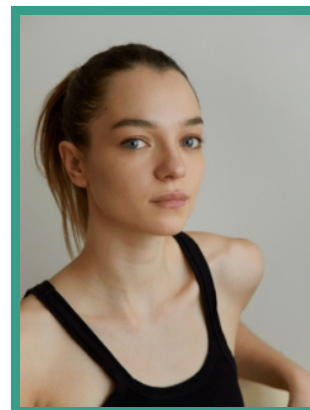


# Esmé Creed-Miles



## FEATURE FILM

| DATE | PRODUCTION (ROLE)              | COMPANY                               | PROJECT DETAILS     |
|------|--------------------------------|---------------------------------------|---------------------|
| 2024 | THE THICKET (Lula)             | Estuary Films                         | Dir. Elliott Lester |
| 2023 | SILVER HAZE (Florence)         | EMU Films / Dark Star Pictures        | Dir. Sacha Polak    |
| 2018 | POND LIFE (Pogo)               | Open Palm Pictures / Indican Pictures | Dir. Bill Buckhurst |
| 2018 | WASTELAND (Sister Stevie)      | Open Palm Films / Alarm Pictures      | Dir. Lisa Mulcahy   |
| 2017 | DARK RIVER (Young Alice)       | BFI Film Fund / FilmRise              | Dir. Clio Barnard   |
| 2007 | MISTER LONELY (Shirley Temple) | Love Stream Productions / IFC Films   | Dir. Harmony Korine |

## TELEVISION

| DATE        | PRODUCTION (ROLE)                     | COMPANY                      | PROJECT DETAILS        |
|-------------|---------------------------------------|------------------------------|------------------------|
| 2024        | THE SANDMAN S2                        | Warner Bros. Television      |                        |
| 2023        | THE DOLL FACTORY (Iris)               | Buccaneer Media / Paramount+ | Dir. Sacha Polak       |
| 2019 - 2021 | HANNA (Hanna)                         | Amazon Studios               | Dir. Uglia Hauksdóttir |
| 2022 - 2023 | THE LEGEND OF VOX MACHINA (Cassandra) | Amazon Studios               | Dir. Sung Jin Ahn      |

## SHORT FILM

| DATE | PRODUCTION (ROLE)  | COMPANY                      | PROJECT DETAILS       |
|------|--------------------|------------------------------|-----------------------|
| 2020 | JAMIE (Jamie)      | Prettybird                   | Dir. Esme Creed-Miles |
| 2020 | SUDDEN LIGHT (Mia) | British Film Institute (BFI) | Dir. Sophie Littman   |