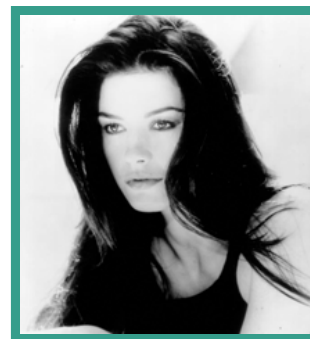


# Catherine Zeta-Jones

Actor · Female



## FEATURE FILM

PRODUCTION (ROLE)	COMPANY	PROJECT DETAILS
DAD'S ARMY (Rose Winters)	DJ Films	Dir. Oliver Parker
RED 2 (Katyja)	Summit Entertainment	Dir. Dean Parisot
SIDE EFFECTS (Dr Victoria Siebert)		Dir. Steven Soderbergh
BROKEN CITY (Cathleen Hostetler)		Dir. Allen Hughes
PLAYING FOR KEEPS (Denise)		Dir. Gabriele Muccino
ROCK OF AGES (Patricia Whitmore)		Dir. Adam Shankman
LAY THE FAVOURITE (Tulip)	Emmett/Furla Films	Dir. Stephen Frears
THE REBOUND (Sandy)	The Film Department	Dir. Bart Freundlich
DEATH DEFYING ACTS (Mary McGarvie)	Australian Film Finance Corporation	Dir. Gillian Armstrong
NO RESERVATIONS (Kate)	Castle Rock Entertainment / Warner Brothers	Dir. Scott Hicks
THE LEGEND OF ZORRO (Elena)	Columbia Pictures	Dir. Martin Campbell
OCEAN'S TWELVE (Isabel Lahiri)	Warner Brothers	Dir. Steven Soderburgh
THE TERMINAL (Amelia Warren)	DreamWorks	Dir. Steven Spielberg
INTOLERABLE CRUELTY (Marylin)	Universal Pictures	Dir. Joel Coen
SINBAD: LEGEND OF THE SEVEN SEAS (Marina - Voice)	DreamWorks	Dir. Patrick Gilmore

CHICAGO (Velma Kelly)	Miramax Films	Dir. Rob Marshall
		Academy Awards 2003 - Winner: Best Supporting Actress BAFTA Film Awards 2003 - Winner: Best Supporting Actress Evening Standard British Film Awards 2003 - Winner: Best Actress Screen Actors Guild Awards 2003 - Winner: Best Supporting Actress Golden Globes 2003 - Nominee: Best Actress in a Motion Picture (Musical or Comedy)
AMERICA'S SWEETHEARTS (Gwen Harrison)	Revolution Studios / Columbia	Dir. Joe Roth
TRAFFIC (Helena Ayala)	Bedford Falls Productions / USA Films	Dir. Steven Soderburgh
		Golden Globes 2001 - Nominee: Best Supporting Actress in a Motion Picture
HIGH FIDELITY (Charlie Nicholson)	New Crime Productions / Buena Vista Pictures	Dir. Stephen Frears
THE HAUNTING (Theodora)	DreamWorks	Dir. Jan de Bont
ENTRAPMENT (Virginia Baker)	20th Century Fox	Dir. Jon Amiel
THE MASK OF ZORRO (Elena Montero / Elena Murrieta)	Amblin Entertainment / TriStar Pics	Dir. Martin Campbell
THE PHANTOM (Sala)	The Ladd Company / Paramount Pictures	Dir. Simon Wincer
BLUE JUICE (Chloe)	Skreba Films / Filmopolis Pictures	Dir. Carl Prechezer
SPLITTING HEIRS (Kitty)	Prominent Pictures / Universal	Dir. Robert Young
CHRISTOPHER COLUMBUS: THE DISCOVERY (Beatriz)	Quinto Centenario / Warner Brothers	Dir. John Glen
LES 1001 NUITS (Sheherazade)	Cinemax	Dir. Philippe de Broca

## TELEVISION

PRODUCTION (ROLE)	COMPANY	PROJECT DETAILS
TITANIC (Isabella Paradine)	American Zoetrope / CBS	Dir. Robert Lieberman
CATHERINE THE GREAT (Catherine)	MR Filmproduktion	Dir. Marvin J Chomsky
THE RETURN OF THE NATIVE (Eustacia Vue)	Craig Anderson Productions / CBS	Dir. Jack Gold
THE CINDER PATH (Victoria Chapman)	Festival Film and Television Prod / Masterpiece Theatre	Dir. Simon Langton

THE YOUNG INDIANA JONES CHRONICLES (Maya)	Amblin Entertainment / ABC	Dir. Simon Wincer
THE ADVENTURES OF YOUNG INDIANA JONES: DAREDEVILS OF THE DESERT (Maya)		Dir. Simon Wincer
THE DARLING BUDS OF AY (Mariette)	Yorkshire Television	Dir. Various
COUP DE FOUDRE	Antenne-2	Dir. Edouard Molinaro
OUT OF THE BLUE (Christy)	BBC	Dir. Nick Hamm

## THEATRE

PRODUCTION (ROLE)	COMPANY
STREET SCENE (Mae Jones)	ENO
UNDER MILKWOOD	
42nd STREET (Peggy Sawyer)	West End
BUGSY MALONE (Talullah)	West End
THE PAJAMA GAME (chorus)	UK Tour
ANNIE	